

Guidance Notes

Our kits can be assembled easily using the following instructions and can be used on their own or joined together to create whichever configuration you might want.

We want you to enjoy your deck purchase for many years to come and by following a few simple steps you will be able to ensure this happens. Please take time to read the assembly instructions carefully before erecting your decking kit and check all parts prior to assembly.

Before starting any construction ensure that you have a level working area to install your frame, be this on a concrete base, paving slabs or compacted gravel etc, DO NOT install directly onto grass / soil.

To complete your build you may also require, fascia boards, corner dolly's, stain, handrails and additional joists to strengthen which are not provided as part of a standard kit.

Please Note: In some instances your joists may require trimming to size to make your frame the correct / exact size.

Recommended Tools & Tips

For all kits we recommend a minimum of two people for safe and hassle free assembly.

Before starting any DIY job you should make sure your tools are up for the task. We highly recommend that you check the conditions and sharpness of any bladed tools, so that your cuts are as clean as possible.

Ensure your power tools have batteries that will last the duration of the installation, otherwise, you may find yourself stopping halfway through, which will delay the project.

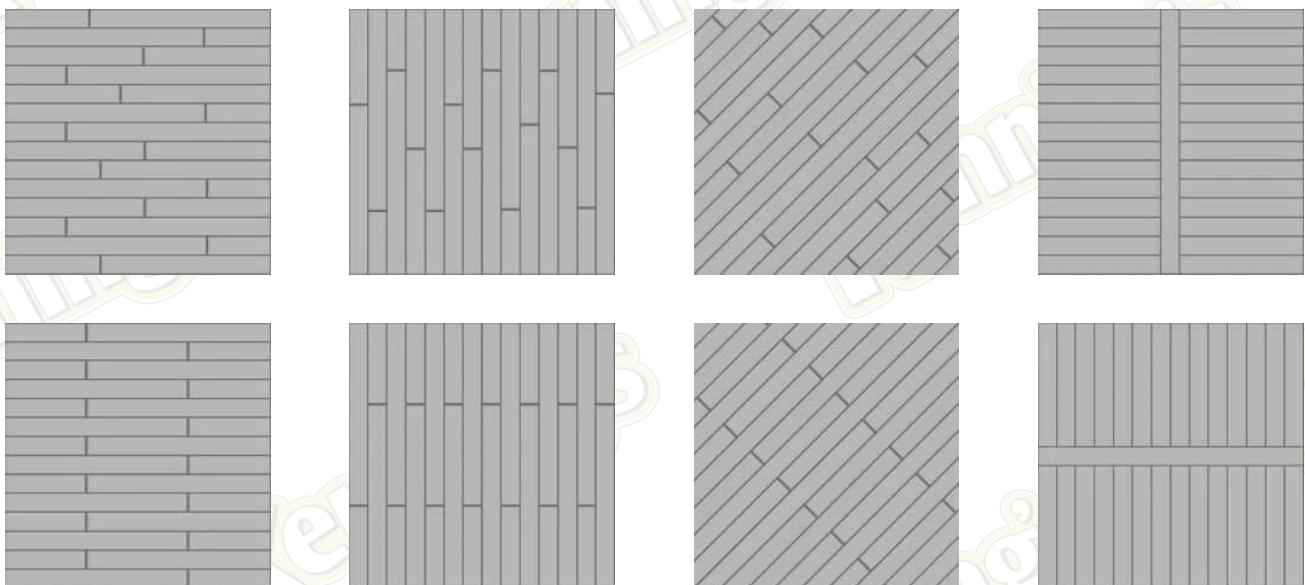
PPE should include protective gloves when cutting and handling deck boards, as well as protective masks, ear defenders and eye protection. Knee pads will be useful when installing a decking frame or screwing boards to joists. Having all these in place before starting your project will speed up the installation time and reduce risk of injury.

- Use sandpaper or a sander to smooth any cut ends.
- If you are making a larger deck, stagger the boards in a regular pattern for greater strength.
- If you're fitting composite decking next to a wall, you'll need to leave a minimum of 10mm expansion gap.

Mandatory Warranty Conditions

All eDecks composite decking must follow these explicit conditions to be considered for any warranty claim.

1. Composite joists must be used, timber can be used as an alternative but will invalidate any warranty.
2. Decking frame joist centres must be set to a maximum of 300mm.
3. A minimum of 23 stainless steel decking clips must be used pro rata per square metre.
4. Starter clips must be used at a minimum interval of every 300mm.
5. Weed suppressant /membrane must be installed underneath your deck.
6. Screws must never be used to directly pierce the face of composite boards to fasten them down.
7. Joist protection tape is provided with all our joists and kits and must be used in conjunction with the composite joist. This tape is specifically designed to further prolong the lifespan of your deck and frame and to protect it from water/moisture rot and deck / frame weathering.
8. To avoid standing water, your decking must be laid with a minimum of a 3% incline away from your property.
9. Your decking frame should not be installed in direct contact with the ground, an appropriate hard standing, padstone or riser should be used.
10. Composite decking should be cleaned using only a suitable composite decking cleaner and water. The use of bleach will invalidate your warranty.
11. If you are creating a larger deck which requires two boards to be butted up end to end, ensure that you leave a minimum 3mm expansion gap between the boards and 10mm if finishing against a wall.
12. If using decking pedestals to raise your deck the pedestals MUST be placed at 600mm intervals.
13. If you are making a larger deck, boards should be laid in a staggered pattern, see below suggested designs.



All images are for illustration only. Please see individual item listings for actual item specifications.

Maintenance

Composite decking is regarded as an innovative alternative to natural timber for its superior durability and appealing aesthetic.

Composite decking offers many advantages over timber decking, and low maintenance is definitely one of them. You'll generally find that you need to spend a lot less time on keeping it clean and if it's installed, maintained and cleaned properly can last over 20 years.

Composite decks need minimal upkeep, but they still need to be cleaned and maintained on a regular basis, periodic maintenance is required to keep your decking in good condition and last longer.

All decking can become slippery when wet or in situations where standing water is present. The growth of algae and moss on composite decking is common especially during the winter. It's often caused by debris and leaves that remain on your deck which hold moisture.

Removing any debris by sweeping with a soft bristle brush regularly prevents the algae and moss from growing, and keeps your decking looking clean. It's also a good idea to trim any trees that are close by to prevent leaves falling on it.

WARNING: You should exercise caution when the surface is wet.

We recommend that to keep your deck looking fresh and clean that it is regularly cleaned using a composite specific cleaner (sold separately)

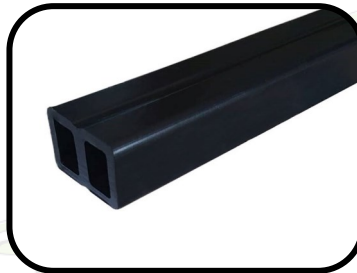
DO NOT USE bleach based cleaners as these can damage the boards and invalidate your warranty.

Components

Please note these instructions are relevant for all our composite decking kits, however components may differ depending on your kit.



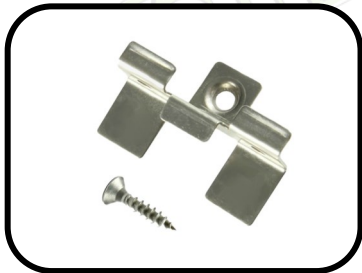
Composite Decking Boards



Composite Decking Joists



Joist Protection Tape



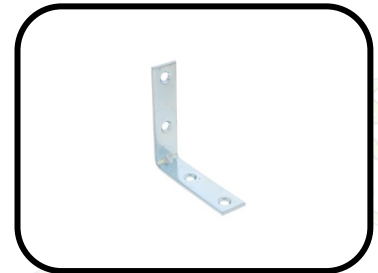
Stainless Steel Fixing Clips

Minimum 23 per SqM

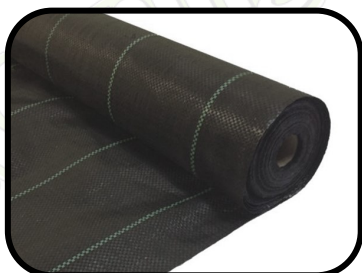


Stainless Steel Starter Clips

Minimum every 300mm



50mm Corner Bracket



Weed Suppressant /
Membrane



Composite Edging Trim



Adhesive



Decking Pedestal / Riser



Joist Screws



Stainless Steel Screws

PLEASE NOTE. IF THESE FITTING INSTRUCTIONS ARE NOT ADHERED TO, IT MAY VOID YOUR WARRANTY
All images are for illustration only. Please see individual item listings for actual item specifications.

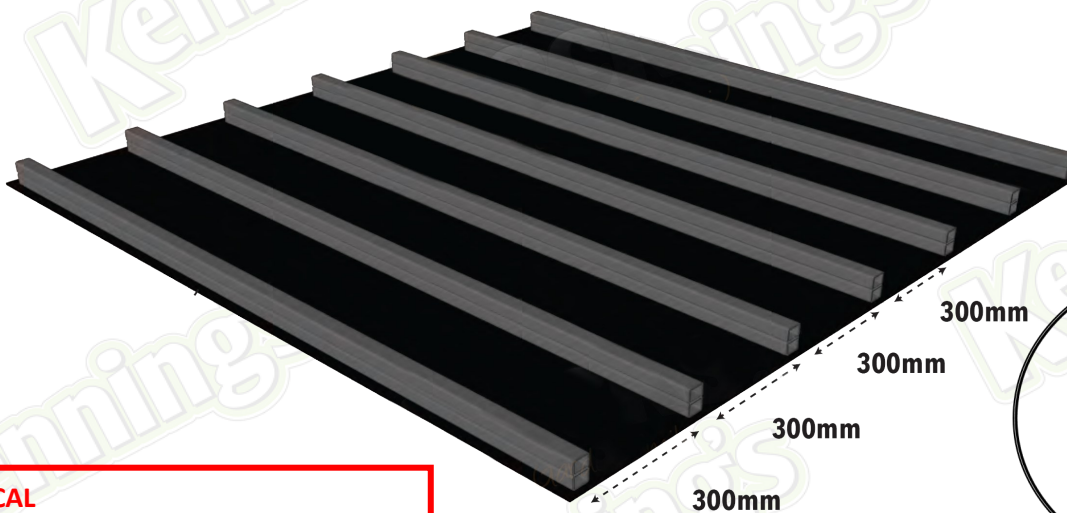
Step 1

Laying your composite deck frame / joists is relatively simple, begin by laying down weed membrane over the entire area on which your decking frame is going to be located and secure with pegs (sold separately).

Position the joists from your kit on top of the weed membrane and measure the spacing to be at 300mm centres .

The use of weed membrane at this stage is critical for the longevity of your deck, it will help to prevent moisture accumulation underneath your joists.

Please Note: Neglecting this step, as well as using Visqueen or Polythene will void any warranty.



CRITICAL

Your decking frame should not be installed in direct contact with the ground, an appropriate hard standing, padstone or riser should be used.

Timber joists can be used as an alternative to composite joists but we do not recommend it as warranty claims are only valid when installed using composite joists as recommended by the manufacturer.

Remember if you do choose to use timber joists, apply a protective treatment to any cut timber before final assembly.



Step 2

Using the screws and angle brackets supplied you can now join the frame to create a solid base on which the boards will sit.

We recommend starting in the corners before working along the edges of the frame using a bracket on each joist to fix them into place.

Once your frame is fastened together, the provided deck tape can now be added, not only does this protect the joists, when screws are driven through it, it seals around the hole to ensure there are no areas where moisture can get through.



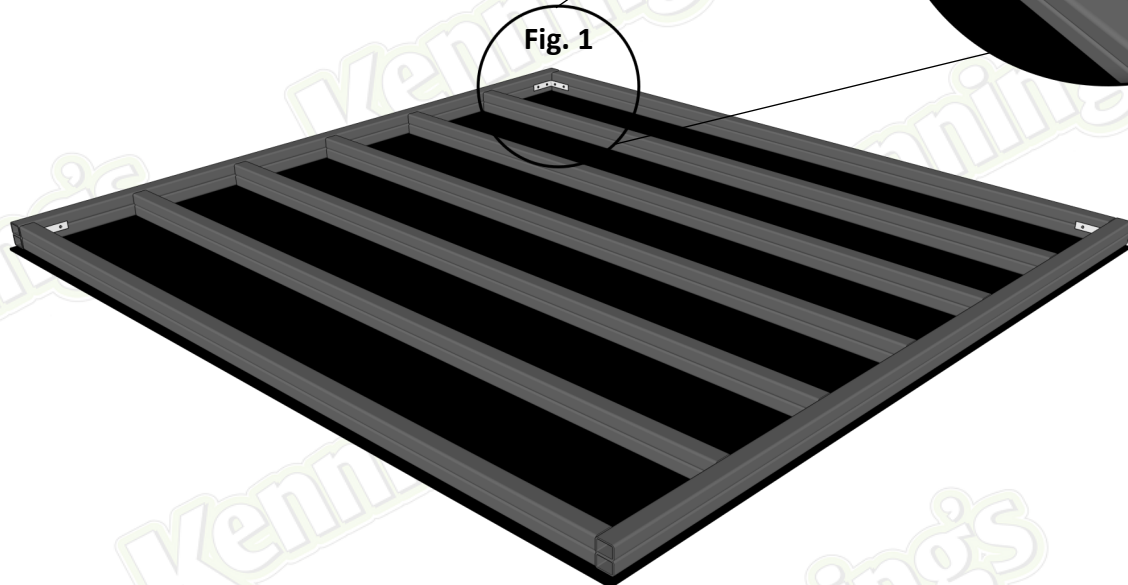
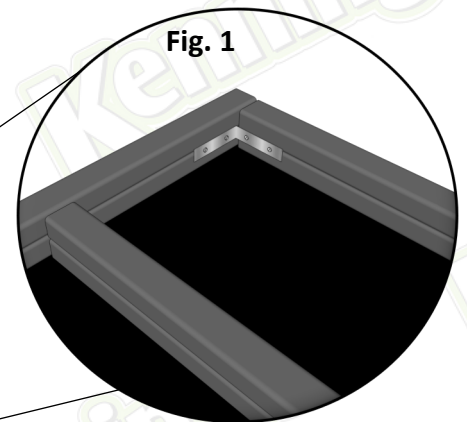
Applying Joist Tape

Clean the surface, ensuring it is clean and free from debris. Remove the butyl tape backing while applying directly to the surface. Run your hand over the tape using firm pressure (preferably with a hand roller) to ensure adequate adhesion. Try to avoid wrinkles or air bubbles, as these will allow moisture to seep in.

CRITICAL

Your decking frame should not be installed in direct contact with the ground, an appropriate hard standing, padstone or riser should be used.

If using decking pedestals to raise your deck the pedestals **MUST** be placed at 600mm intervals.

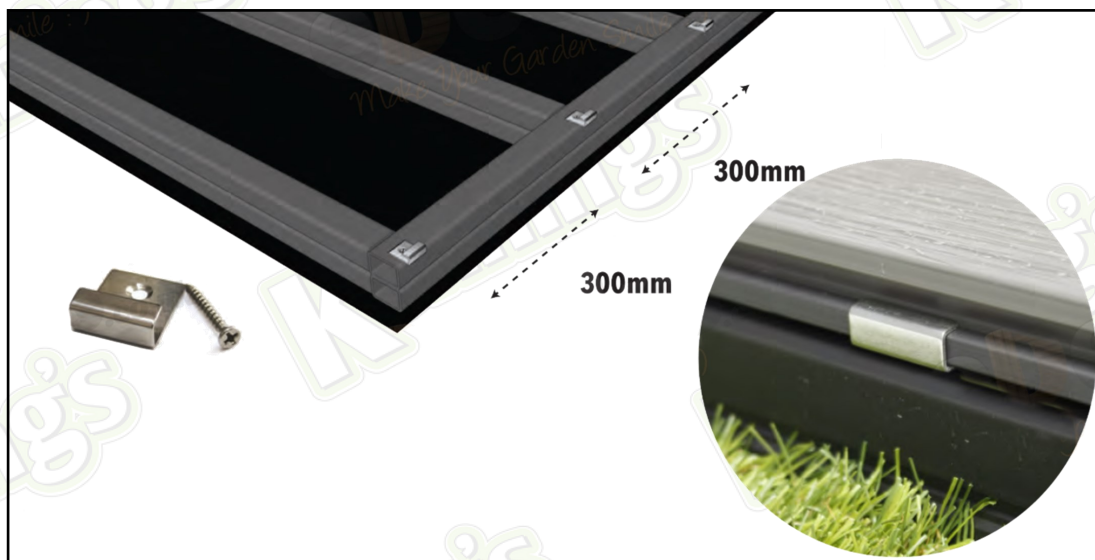


PLEASE NOTE. IF THESE FITTING INSTRUCTIONS ARE NOT ADHERED TO, IT MAY VOID YOUR WARRANTY
All images are for illustration only. Please see individual item listings for actual item specifications.

Step 3

Install starter clips along the leading edge of your frame which run the opposite direction of your joists, this will allow for your first board to be fitted and secured into place.

Ensure that the starter clips are all level so that the board sits perfectly straight.



All clips (starter and intermediate) should be installed at intervals of 300mm just like your joist work.

If you are creating a larger deck which requires two boards to be butted up end to end, ensure that you leave a mandatory 3mm expansion gap between the boards and 10mm if finishing against a wall.

PLEASE NOTE. IF THESE FITTING INSTRUCTIONS ARE NOT ADHERED TO, IT MAY VOID YOUR WARRANTY
All images are for illustration only. Please see individual item listings for actual item specifications.

Step 4

Once you have slotted your first board into the starter clips, use the intermediate stainless steel fixing clips for the following boards as outlined below; these clips will help the boards to be uniformly spaced and allow for expansion.



PLEASE NOTE. IF THESE FITTING INSTRUCTIONS ARE NOT ADHERED TO, IT MAY VOID YOUR WARRANTY
All images are for illustration only. Please see individual item listings for actual item specifications.

Step 5

Once you have laid the final row of boards they need to be secured in place, by driving a small screw through the groove in the side of the board at 45°.

We recommend using a small head stainless steel screw such as a 60mm Spax Wirox screw to fix the board as shown.

Please Note: Do not pierce the surface of the decking board or this will negate any warranty.



OPTIONAL

Composite edge trim is designed to go around the edge of your deck to hide the showing grooves of the boards / fascia's.

To install the trim, we recommend a strong adhesive such as GripBond Pro.



Composite Decking Kit

Fitting Guide



Enjoy your new Composite Decking!

PLEASE NOTE. IF THESE FITTING INSTRUCTIONS ARE NOT ADHERED TO, IT MAY VOID YOUR WARRANTY
All images are for illustration only. Please see individual item listings for actual item specifications.

Page 10 of 10